

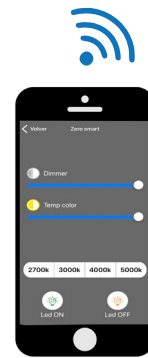
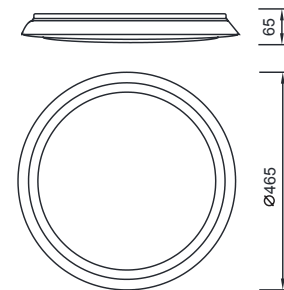
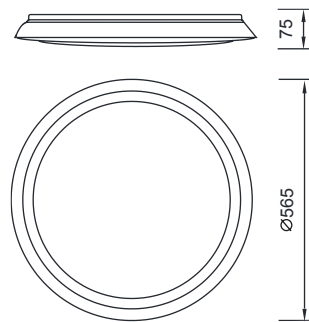
EDGE SMART

3000K-5000K

Plafón-Ceiling Lamp

5949 Blanco-White
LED 80W 4300lm

5950 Blanco-White
LED 56W 3000lm



R00129



Metal/Acrílico-Metal/Acrylic 220-240V~50/60Hz

5949

EDGE SMART



Visita www.mantrailuminacion.com/videos-mantra



Google Assistant
amazon alexa
VOICE CONTROL
SYSTEM

